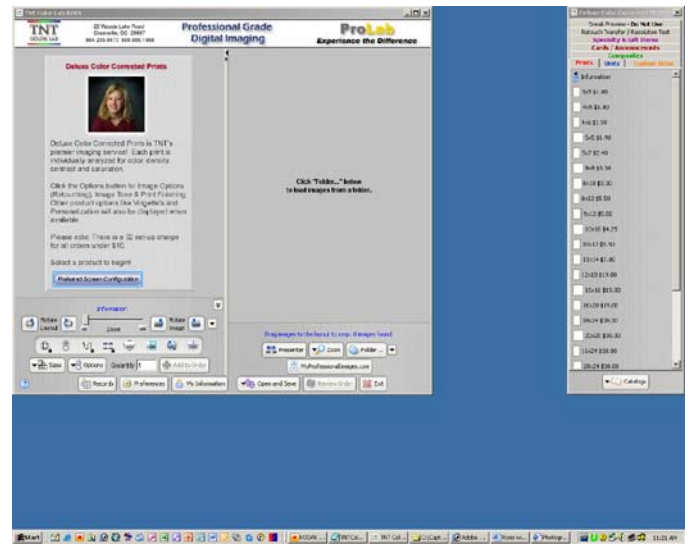
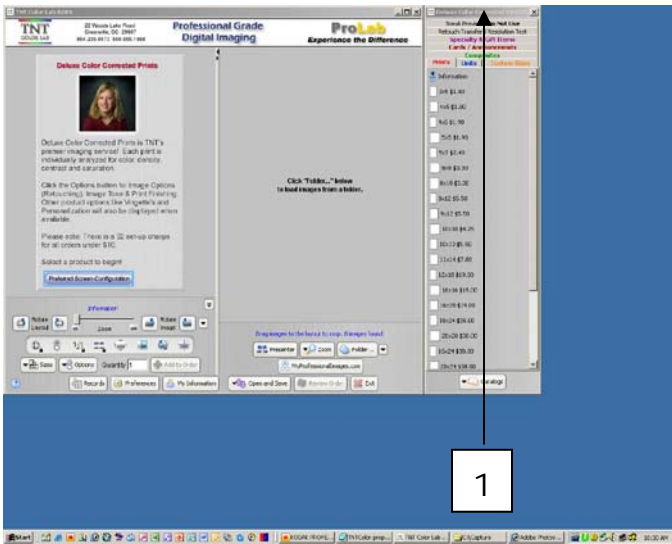




ROES Screen Configuration

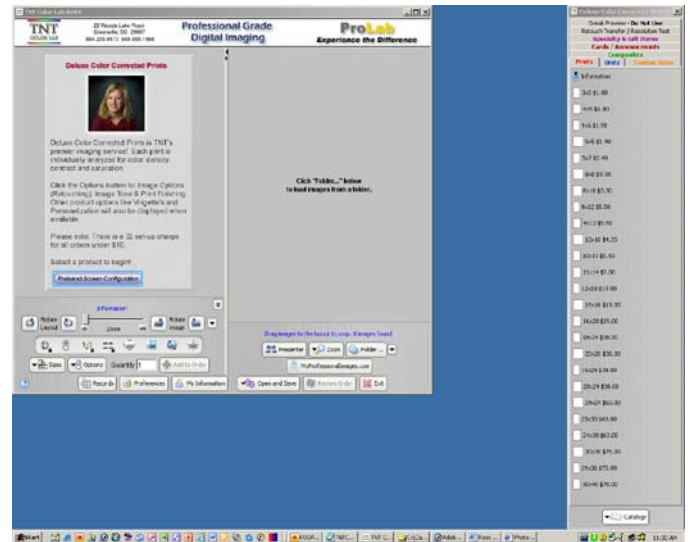
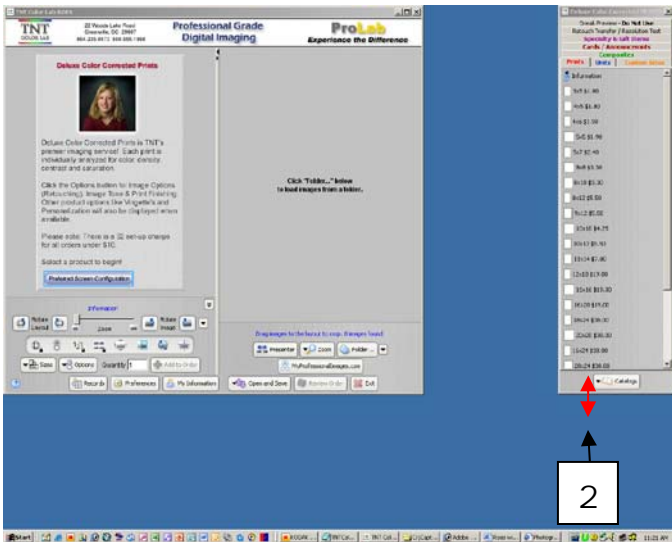
The initial launch configuration for ROES displays the program windows at a resolution of 1024x768.

If your monitor looks like this, you have a high resolution monitor. We'll want to adjust the ROES windows to take advantage of this higher resolution!



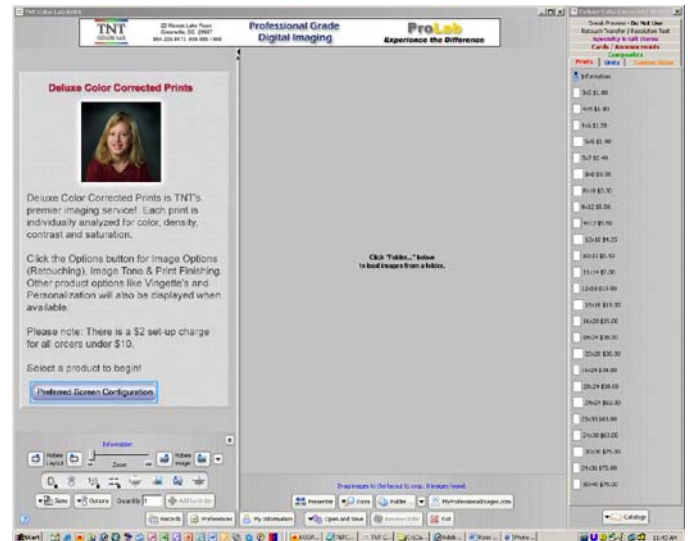
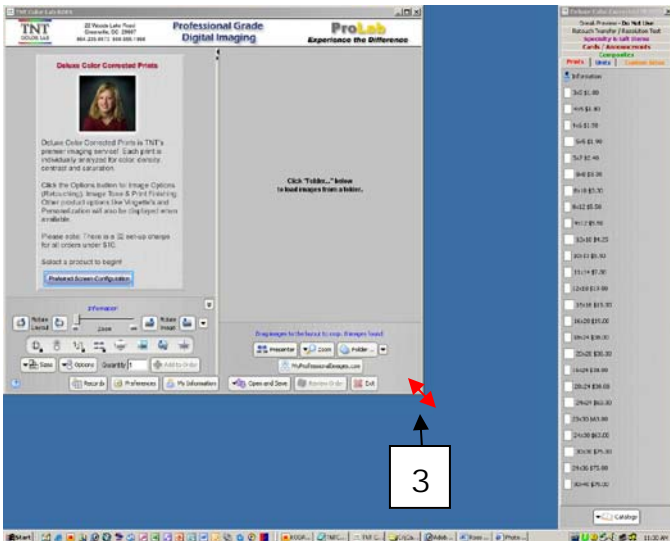
1 Position your cursor on the Title Bar of the Sizes Pallet Window (*Deluxe Color Corrected Prints*).

Left click and hold to drag the window to the upper right hand corner of your screen.



2 Position your cursor at the bottom edge of the window and it will change into a vertical set of arrows.

Left click and hold to drag the window to the bottom of your screen.



3 Hover your cursor on the bottom right hand corner of the Main ROES window and it will change into a diagonal set of arrows.

Left click and hold to drag the Main ROES window to align it with the bottom left hand corner of the sizes pallet window.

If you close you Sizes pallet, you can reopen it by clicking on the Sizes Button and choosing “Show Sizes Pallet”.

You are not limited to this configuration – you can adjust the Window positions to whatever works best for you! ROES will automatically save the way you position your windows and redisplay them the next time you launch ROES!

One last thing, the main ROES window is comprised of two columns separated by a vertical bar. If you hover your cursor on the bar, it will change into a horizontal set of arrows.

You can adjust the percent of real estate allocated to each column by sliding the bar to the right or to the left.